

BRANDT

The New Paradigm for Modern Agriculture

Spray, Pick and Pack

OMRI
Listed



Eco-Friendly Pest and Disease Control

BRANDT Technology



While extracts of the Chrysanthemum flower created the powerful pesticide today known as Pyrethrin, decades of similar research have yielded the breakthrough technology of the bio-pesticide line.

Derived from unique and patented blends of botanical oils, the BRANDT line is engineered to control pests and disease on most ornamentals.

Efficacy and safety both are the key ingredients in the bio-pesticide line. All products may be applied throughout the growing season (including bloom) to gain control of pests, disease and weeds.

These products have not been registered by the US Environmental Protection Agency. Brandt Consolidated, Inc. represents that this product qualifies for exemption from registration under the Federal Insecticide, Fungicide, and Rodenticide Act.

For centuries, insecticides, herbicides, fungicides and pharmaceuticals of all kinds have been derived from plants and their extracts. Many of these naturally derived products exist today and are common in modern agriculture such as Pyrethrin, Rotenone, and Neem.

The BRANDT Sustainable product line is the result of modern technology based on the natural defenses that plants use for protection against insects and pathogens - plant essential oils.

Ideal for Integrated Pest and Disease Management programs, BRANDT Sustainable products complement current synthetic products by adding an additional dimension to control. These products rapidly degrade in the environment, are less of a threat to beneficial organisms, and overcome the issue of pesticide resistance due to repeated chemical application.

- University and Grower Proven Efficacy
- Zero REI (Re-entry Interval)
- Zero Post-harvest Interval (Spray the same day as harvest)
- Ideal for Integrated Pest Management (IPM) Programs
- National Organic Program Compliant
- Enhanced Disease Resistance



Application Tips for All BRANDT Sustainable Products

- All BRANDT Sustainable products are emulsifiable concentrates.
- Good coverage is essential for successful control.
- Use an organic adjuvant if required.
- Fill half of spray tank with water before adding product to the tank. If other products such as insecticides, fungicides or fertilizers are being tank mixed, add these products first, then add the BRANDT products under constant agitation.
- Maintain agitation during spray application.
- Repeat applications as needed without fear of phytotoxicity or chemical resistance.

Ecotec[®]

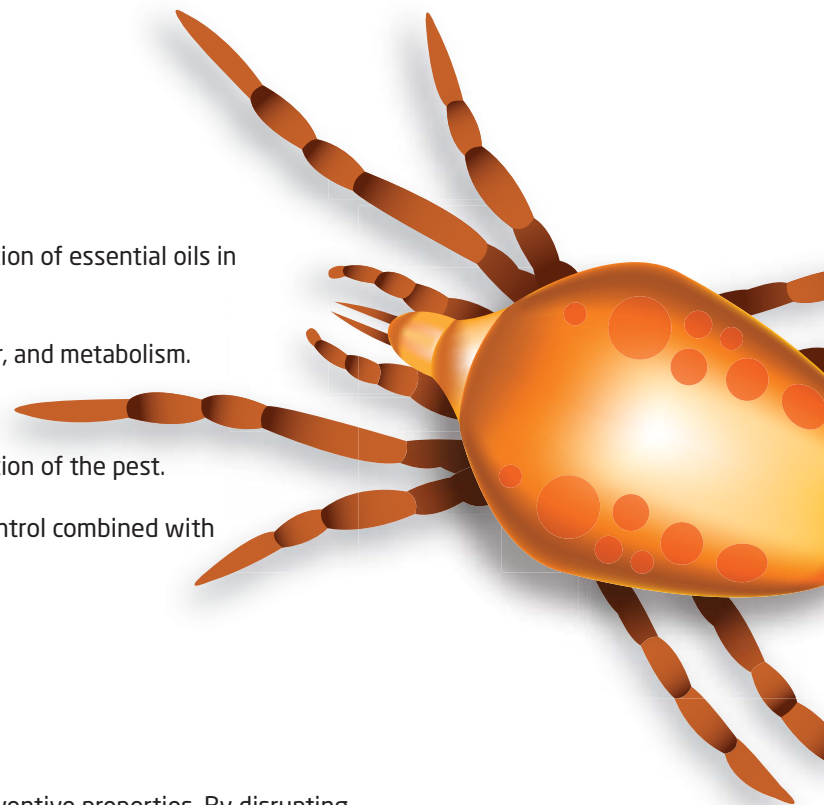
Broad Spectrum Insecticide/Miticide

Ecotec is a unique insecticide/miticide with two modes of action.

Extensive research discovered that the unique patented combination of essential oils in ECOTEC block octopamine neuroreceptors on insects and mites.

Octopamine regulates the insect's movement, heart rate, behavior, and metabolism. Blocking such receptors causes quick knockdown and death of the target insect. As an essential oil, a temporary covering of the insect's outer membrane with a spray of ECOTEC leads to suffocation of the pest.

ECOTEC's natural origin provides the benefit of effective pest control combined with environmentally safe properties.



Sporatec[®]

Broad Spectrum Fungicide

SPORATEC is a minimum risk fungicide with both curative and preventive properties. By disrupting cell membrane integrity at different stages of fungal development, acting as a fungistat and preventing fungal attachment to the plant, SPORATEC provides excellent control of fungal pathogens.

The combination of modes of action allow SPORATEC to be used on its own or as a component of fungicidal spray rotations to ensure alternating modes of action during the growing season.

Matratec[®]

Non-Selective Post Emergent Herbicide

MATRATEC is a foliar contact, non-selective, emulsifiable herbicide that will control actively growing green vegetation as well as annual and perennial broadleaf and grassy weeds. MATRATEC product does not translocate. It will affect only those portions of plants that are coated with the spray solution.

MATRATEC will damage crops, therefore care should be taken to prevent spray from contacting non-target areas. Coverage with MATRATEC is very important. The better the coverage, the better the product will perform. Do not allow spray solution to drip, splash or drift onto desirable vegetation.

MATRATEC is most effective on weeds less than six inches in height. Multiple applications may be necessary for control of larger weeds. Repeat treatments will be necessary for new plants emerging from seed or re-growth of treated vegetation. Leaf damage should be visible on most weeds within hours of application. Cool weather may slow the activity of MATRATEC and delay or reduce effects.





Brandt Consolidated, Inc.
2935 South Koke Mill Road
Springfield, Illinois 62711 USA
www.brandtconsolidated.com
217 547 5840
800 300 6559

Brandt Central America
16 Ave. 20-60 zona 10
Jardines del Acueducto Apto. 306
Guatemala City, Guatemala
502 2367 3141

Brandt Europe
6 rue Saint-Hilaire
94210 La Varenne Saint-Hilaire
France
+33 01 48 89 65 32

Brandt South America
Av 11 de Septiembre 1945
oficina 809 Providencia
Santiago de Chile
56 2 4692260

BRANDT